

The Cotteridge Church - Room Hire

If you are looking **for a warm welcoming venue** for your next event **The Cotteridge Church** is the place for you with a variety of rooms for hire. We have 8 rooms available from a large hall to a small meeting room with a range of rates to fit your budget.

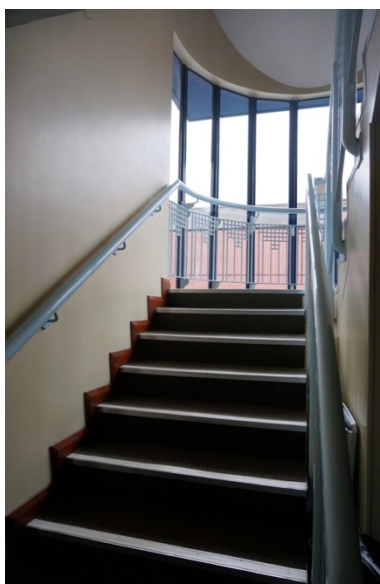
Situated on the A441 route in and out of the City with excellent public transport links with Kings Norton train station only 30 meters away and bus stops for routes 11, 18, 19,45,47,49, 84 and 146.

Our spaces are available to hire by local groups and organisations, charities and individuals for meetings, training days, conferences, events, activities, parties or celebrations.

We can cater for your needs with rooms set up for meetings, conferences, social groups or even children's parties! We offer free Wi-Fi. Catering is provided for groups and our café is open daily from Monday to Saturday.

For further information and enquiries or to make a booking please contact David Pycok, Administrator between 9am and 2pm Mon to Fri on 0121 433 5518 or email administrator@thecotteridgechurch.org.uk

We look forward to hearing from you.



<https://www.facebook.com/TheCotteridgeChurch/>

<http://www.thecotteridgechurch.org.uk>
[cotteridgechurch](http://www.thecotteridgechurch.org.uk)

<https://twitter.com/>

David Pycok, Administrator between 9am and 2pm Mon to Fri on 0121 433 5518 or email administrator@thecotteridgechurch.org.uk

The Cotteridge Church - Room Hire Rates

Room	Layout	Approx. capacity	Size	Hourly rate	Half day 3 hour session
Malvern	Theatre	160	235m2	£40	£90
	Conference	80			
	Social	100			
Clent	Theatre	60	85m2	£25	£60
	Conference	40			
	Social	50			
Cotswold	Theatre	35	40m2	£18	£50
	Meeting	16			
	Social	20			
Chiltern	Conference	25	30m2		
	Meeting	16			
	Social	20			
Cheviot	Conference	20	25m2		
	Meeting	12			
	Social	15			
Clee	Social	20	37m2		
Lickey	Social	10	20m2	£15	£35
Office 1	Meeting	4	8.7m2		

Discounts are available for charity groups and regular users. Full terms and conditions are available on enquiry.

Equipment is available to hire including flipcharts, projectors and screens along with the use of TV screens for an additional charge of £10 each per session.

Kitchens are available for the serving of food and drink with an additional charge of £10 per session.

<https://www.facebook.com/TheCotteridgeChurch/>

<http://www.thecotteridgechurch.org.uk>
[cotteridgechurc](http://www.thecotteridgechurch.org.uk)

<https://twitter.com/>

David Pycok, Administrator between 9am and 2pm Mon to Fri on 0121 433 5518 or email
administrator@thecotteridgechurch.org.uk

The Cotteridge Church - Room Hire Facilities

Malvern Room

This is our largest space with a maximum capacity of 200 seated.

There is a staged area and audio-visual equipment available.



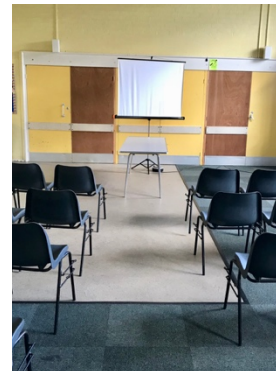
Clent Room

A hall space ideal for smaller conferences seating 60, groups and activities.

A light south facing room. Flip chart available.

Ideal for practical activities and groups with both carpeted and hard floor areas.

Available for private functions on Saturdays and Sunday afternoons. Adjacent kitchen available at £10 per hour.



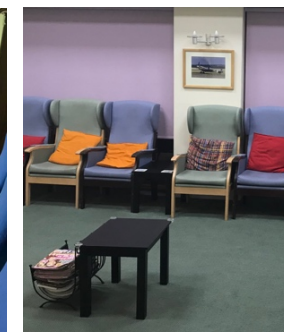
Cotswold, Chiltern and Cheviot Rooms

These rooms are ideal for meetings and groups. They are flexible spaces seating between 35 and 20, and can be arranged for conferences, meetings or informal groups. Flip charts are available.



Clee and Lickey Rooms

These 2 lounge areas for between 20 and 10 people are available for hire evenings Mon to Fri and Saturdays. They are arranged with comfortable seating and small tables. Both have AV equipment available. There is a small kitchen adjacent to the rooms which is available to hire for a small additional charge of £10 per hour.



Office 1

A small office furnished with both desk and chairs. Ideal for small group meetings and one to one sessions.



The Cotteridge Church - Room Hire Catering

3cs café

Our café is open Monday to Friday 10am to 2pm and Saturday 10am to 12 noon.

There is a range of drinks, sandwiches and cakes available and a daily set menu at lunch time, Monday to Friday.



For room hire we can cater for both small and large groups.

Refreshments

Tea and Filter Coffee £1.20 per head

Tea and Filter Coffee with biscuits £1.40 per head

Lunches

Usual service between 12 and 1pm

Cold Buffet Lunch (minimum of 10 people) from £6.50 per head

Hot Meal Lunch (minimum of 10 people) from £6.50 per head (includes hot drinks)

We can cater for special diets and offer a variety of meal choices. Further details and menus on enquiry.

<https://www.facebook.com/TheCotteridgeChurch/>

<http://www.thecotteridgechurch.org.uk>
[cotteridgechurc](http://www.thecotteridgechurch.org.uk)

<https://twitter.com/>

David Pycok, Administrator between 9am and 2pm Mon to Fri on 0121 433 5518 or email
administrator@thecotteridgechurch.org.uk

The Cotteridge Church - Room Hire Private functions

Our rooms are available to hire for private celebrations, parties and gatherings. Please get in touch to discuss your requirements and to request further information.

Children's Birthday Parties

Our rooms are available for children's parties for 1 to 11 year olds.

The Clent room is ideal for such occasions offering both carpeted and laminated floor areas with tables and chairs for small children available.

We offer the Clent room on Saturdays from 10am to 1pm (including set up and clear away times) for £50.

The adjacent kitchen is available for serving food and drinks for an extra £10.



<https://www.facebook.com/TheCotteridgeChurch/>

<http://www.thecotteridgechurch.org.uk>
[cotteridgechurc](http://www.thecotteridgechurch.org.uk/cotteridgechurc)

<https://twitter.com/>

David Pycok, Administrator between 9am and 2pm Mon to Fri on 0121 433 5518 or email
administrator@thecotteridgechurch.org.uk